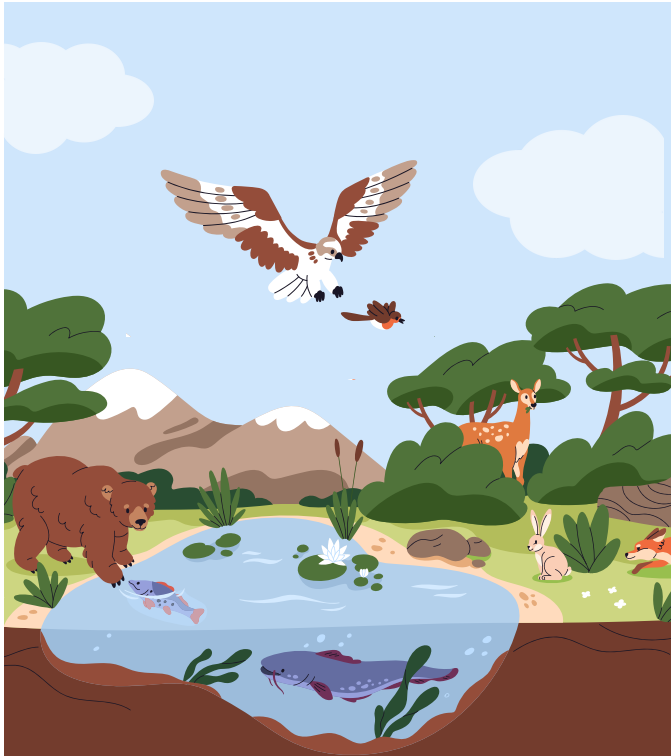


Our Changing World



What is a food chain and where does it start?



Project Questions

How do we know if something is dead, alive or never been alive?

What might you find in a habitat?

How do habitats change over time?

Who eats who, in the animal world?

Visits and Visitors

Lion Learners

Shakespeare 60

Care for a plant and support a charity

Golden Themes

Voice and Influence: How to take part in making and changing rules in own class / school • Uneven sharing of power and how some people are excluded from decision- making

Human Rights: The need to respect the rights of others • How people can damage or improve the environment

KEY DATES:

- September 13th Lion Learners visitors into school
- September 20th Parent Voice
- October 2nd Harvest Assembly
- October 26th School photos

ATTENDANCE

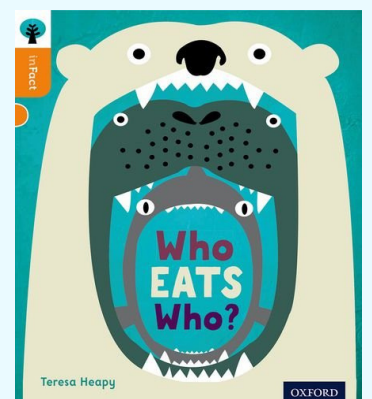


NEVER ABSENT

NEVER LATE

- 🕒 School starts at **8:45**
- ✅ It is illegal for your child to be absent from school without authorisation
- ✅ High attendance in school gets your child's life off to a flying start!
- ✅ To report an absence please contact us on the number below:
- ☎ 01135351000
- ✉ office@shakespeareleeds.org.uk

WE ARE READING:



To read about the Year Two curriculum in more detail click [here](#)

**SHAKESPEARE
PRIMARY SCHOOL**

A curriculum of excellence
from the heart of Leeds

www.shakespeareleeds.org.uk

