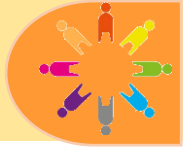


Big World, Little Me



What makes me special?

BIG WORLD, LITTLE ME



Project Questions

- Who is in my family?
- What do we celebrate?
- What are my likes and dislikes?
- How am I different to you?
- How are we the same?

Visits and Visitors

Key Person parent morning – A circle time to for staff and families to get to know one another

Shakespeare 60

- Learn and recite a poem
- Use a knife and fork

Golden Themes

Voice and Influence

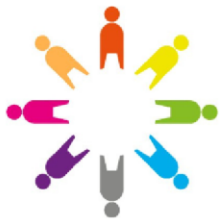
- Rules in school and in our class
- How rules can help us

Peace and Conflict

- How actions can have consequences
- Basic ways to avoid, manage and resolve conflict

ATTENDANCE

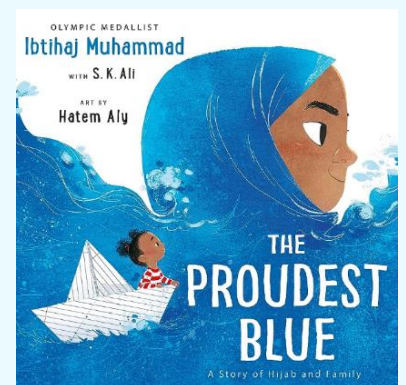
- 🕒 School starts at **8:45**
- ✅ It is illegal for your child to be absent from school without authorisation
- ✅ High attendance in school gets your child's life off to a flying start!
- ✅ To report an absence please contact us on the number below:
- ☎ 01135351000
- ✉ office@shakespeareleeds.org.uk



NEVER ABSENT

NEVER LATE

WE ARE READING:



To read about the Reception curriculum in more detail click [here](#)

**SHAKESPEARE
PRIMARY SCHOOL**

A curriculum of excellence
from the heart of Leeds

www.shakespeareleeds.org.uk

