



Geography

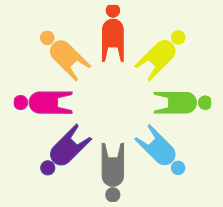
Year 3

Animal Bones and Animal Homes

How do geographers describe the world?



Shakespeare Primary School and Nursery



Speak like a Geographer

Equator- this is an invisible line that runs around the centre of the Earth

Northern hemisphere- this is half of the earth which is to the **north** of the equator

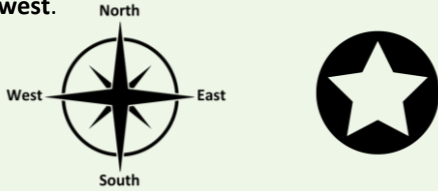
Southern hemisphere- this is half of the earth which is **south** of the equator

Essential Knowledge

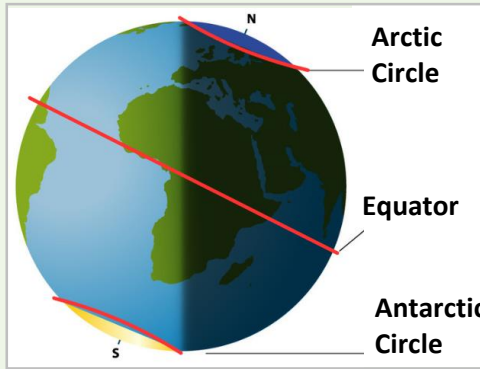
Europe is a continent with a lot of differences. There are snow-covered mountains and glaciers, cool green valleys and countryside, and hot summer beach resorts. Tiny countries and huge ones join together to make up this continent – there are 46 countries altogether. Europe is famous for its cities – modern and very old – and for its attractions like the Eiffel Tower in Paris and Buckingham Palace in London. Perhaps your favourite food is pasta or pizza? Both come from Italy in Europe!

Geographical Skills and Fieldwork

A **compass** is used to show direction. The four main directions used are **north, east, south and west**.



The **capital city** of each country can usually be located on a map by looking for the **circled star symbol**.



Polar circles- Earth has two polar circles, these are called the **Arctic Circle** and the **Antarctic Circle**. These are at the most **northern** and **southern** parts of our planet.

Map of North and South America:



Locational and place knowledge

Map of Europe:



Project Questions

- What are the names of some countries in Europe?
- What are the names of some countries in North and South America?
- Why do different animals live in different parts of the world?
- How do different vegetation belts support different types of life?

Russia is the largest country in Europe and, in fact, the world!

The United Kingdom is in **Northern** Europe.

Key concepts

- Location
- Human and physical processes

Human and Physical Geography

A **vegetation belt** is an area of land with distinct plant types. There are five main types of vegetation belt:

