



History

Year 4

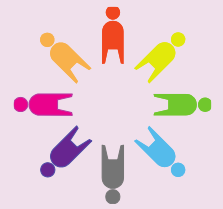
Roman Britain

55BC to AD 410

How did the Roman invasion change Britain and how does this shape our lives today?

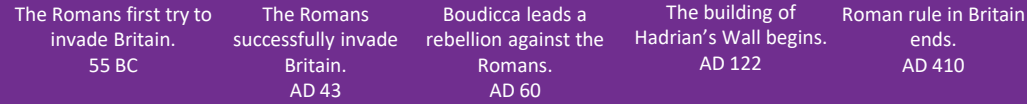


Shakespeare Primary School and Nursery



Essential knowledge

Almost two thousand years ago, Britain was home to various Celtic tribes. Then in AD 43, a Roman invasion led to a major change within society. The Romans wanted Britain's metals, natural resources and even sold many Celtic people into slavery. Britain then became part of a huge empire ruled from Rome. During this time, the Roman army fought many battles to take control and had to defeat fierce warriors such as Boudicca in her revolt against the invaders. To stop further revolts, Hadrian's wall was built to protect the Romans and to control trade and movement of people. But once the Romans had seized control, they created a lasting impact in Britain that can still be seen today. This is shown in architecture, forts, walls, roads and bath houses that are still evident across England and Wales.



Speak like a Historian

Civilised

This term is used to describe a society that is advanced and has clear laws and customs.

Combat

This is a violent conflict between two or more groups or nations.

Emperor

An individual who rules an empire.

Society

This is all the groups of people that share the same laws, rights and resources.

Empire

A group of countries or regions that are controlled by one ruler or one government

Key questions

What was Britain like before the Romans invaded?

Why did the Romans invade Britain?

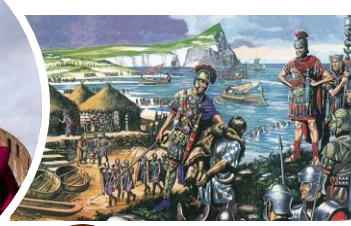
Who fought back when the Romans invaded?

Why did the Romans have control over such a large empire?

What lasting impact did the Romans leave in Britain?

Significant people

Boudicca was a member of a British tribe called the Iceni and lived in a region named East Anglia today. As a warrior queen, she led the Iceni tribe in a rebellion against the Romans but was finally defeated at the battle of Watling Street. Boudicca could not face being captured by the Romans, so she decided to poison herself instead by swallowing a deadly drink.



Substantive concepts

- Empire
- Invasion

Timeline

