



History

Year 5

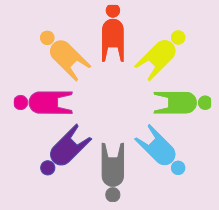
The Kingdom of Benin

AD 900 to AD 1897

How did the West African Kingdom of Benin (900-1900) develop and demise?



Shakespeare Primary School and Nursery

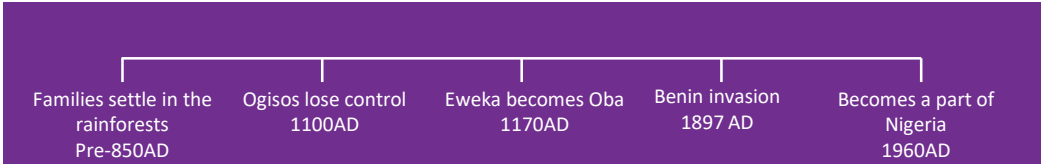
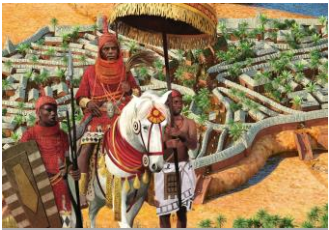


Essential knowledge

The kingdom of Benin was a wealthy kingdom that grew in western Africa (Now Nigeria) from AD 900 onwards. The kingdom controlled a large amount of land and traded metals, ivory, food and palm oil and this is what made the kingdom so successful.

When the kingdom began, it was ruled by a series of kings called the Ogisos but they soon lost control of their country. Prince Oranmiyan sent his son, Eweka, to be the first Oba of Benin. An Oba is a ruler or a king. Oba's and Queen Mothers were celebrated through the creation of Bronze sculptures now controversially exhibited in the British Museum in London.

By the end of the 1800s, the Obas had lost power and control over Benin. The British wanted to take over and a battle ensued, leading to the British invasion and destruction of Benin in 1897.



Speak like a Historian

- Invasion** - When an army or country uses force to enter and take control of another country.
- Trade** - To willingly give things or services and get other things or services in return.
- Oba** - A powerful ruler of the kingdom.
- Conflict** - Conflict is serious disagreement and argument.
- Monarchy** - A person who reigns over a kingdom or empire.
- Natural resources** - Natural resources are materials from the Earth that are used to support life and meet people's needs.

Key questions

- What did they trade in Benin and how did this impact the Kingdom?
- What is the role of an Oba?
- Who was Eweka and how did he become an Oba?
- What happened in 1897?
- Should the Benin bronzes be returned?
- Why should we learn about Benin?

Significant people

Ewuare (also Ewuare the Great or Ewuare I) was the Oba of the Benin Empire from 1440 until 1473.

The kingdom reached its greatest power and size under Oba Ewuare the Great. He expanded the kingdom and improved the capital, present-day Benin City. He left a significant legacy and is often considered the first King of the Kingdom of Benin.



Substantive concepts

- Monarchy
- Peace and Conflict

Timeline

