



# History

## Year 6

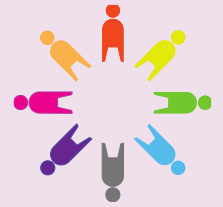
# The Industrial Revolution

## 1837 to 1901

What was the impact of the Industrial Revolution on our City?



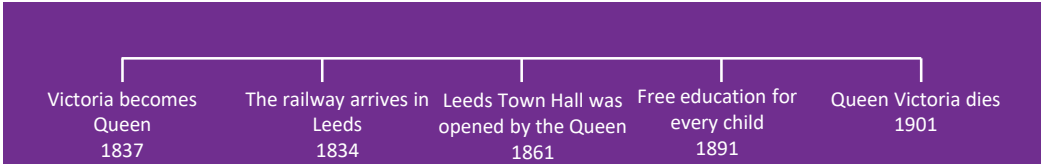
Shakespeare Primary School and Nursery



### Essential knowledge

The Victorians are those who lived in Britain during the reign of Queen Victoria, which was from 1837 to her death in 1901.

During the 64 years that Queen Victoria was on the throne, Britain was also going through the Industrial Revolution. It was an age of technological progress and invention, machines and factories, magnificent buildings and new ideas. People migrated from rural areas to larger towns and cities. Leeds rapidly expanded, with its population growing from 25,000 in 1790 to 88,000 in 1841. During the early Victorian era, canals were built all over England. The Leeds Liverpool canal was built to move goods more efficiently, including goods from the British Empire. Trade unions were formed in Britain to protect workers from unnecessary risks using dangerous machines, unhealthy working conditions, and excessive hours of work. The impact of the Industrial Revolution can still be seen in Leeds today, through housing, transport and factories.



### Speak like a Historian

**Industrialisation** - The development of industries in a country or region on a wide scale.

**Empire** - A group of countries ruled by a single person, government, or country.

**Revolutionise** - To make a big change to the way something looks or works.

**Reign** - To be the king or queen of a country.

**Urbanisation** - the increase in the proportion of people living in towns and cities.

**Protest** - a statement or action expressing disapproval of or objection to something.

### Key questions

What was the Victorian era?

How did the British Empire expand during the Victorian era?

Why was the Leeds Liverpool canal built?

How did the movement of people effect the landscape of city and countryside around it?

What impact did the trade unions have on working conditions in factories?

What impact of industrialisation can we see in Leeds today?

### Significant people

Victoria was a British Queen who reigned from 1837 to 1901. At the time of her death, she was the longest-reigning British monarch, but she has since been overtaken by Queen Elizabeth II. The 'Victorian' period of history is named after her. Victoria became queen when she was 18 years old in June 1837. She was a strong character and brought a renewed sense of energy and determination to the British monarchy.



### Substantive concepts

- Democracy and rights
- Trade

### Timeline

