



# History

## Year 6

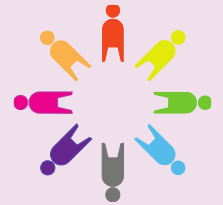
# World War II: A Child's View

## 1939-1945

What effect did WW2 have on children around the UK, and especially in Leeds?



Shakespeare  
Primary School  
and Nursery



### Essential knowledge

World War II was the second world war of the 20th Century. WW2 was fought on the continents of Europe, Africa and Asia, as well as in the air and on the sea. The main Allied powers were the British Empire, France, America and the USSR (Russia). The Allies fought against Nazi Germany, Italy and Japan. Winston Churchill was the British Prime Minister for much of WW2 and Adolf Hitler was leader of the Nazi Party. D-Day was the start of Allied operations which would ultimately liberate Western Europe, defeat Nazi Germany and end the Second World War. During the war, many children living in big cities and towns were evacuated from their homes to places considered safer, usually out in the countryside. The heavy and frequent bombing attacks on London and other cities was known as the 'Blitz'. Night after night, from September 1940 until May 1941, German bombers attacked British cities, ports and industrial areas.



### Substantive concepts

- Empire
- Invasion

### Timeline



### Speak like a Historian

**Allies** - In war, allies are friends — specifically, friendly nations — you can trust.

**Axis** - The group of countries including Germany, Italy, and Japan that fought against the allies.

**Rationing** - A system of limiting the amount of something that each person is allowed to have.

**Evacuation** - The act of moving people from a dangerous place to somewhere safe.

**Air raids** - an attack in which bombs are dropped from aircraft on to a ground target.

### Key questions

What happened to children during the war and what impact do you think this would have had on them?

Why do you think the families were evacuated from the big cities?

Who were the allies and the axis?

What happened during the Blitz?

Why was D-Day so significant?

What effect did the war have on the people and city of Leeds?

### People of Leeds

Leeds suffered several serious bombing raids during the course of the Second World War. A lot of local people were affected when their homes were damaged. The worst air raid on the city was on 15 March 1941. Nicknamed the 'Quarter Blitz', it severely damaged the city's town hall and many other sites. The citizens of Leeds took action to protect themselves against air raids. People built shelters in their back gardens. Leeds children were, on the whole, evacuated to smaller towns and villages in more rural parts of Yorkshire, such as Northallerton, Leyburn and Masham. People tried to ensure that children were protected from the war, not only by sending them away from danger, but also by distracting them with events such as shows or 'Youth Week', which was held in Roundhay Park.