



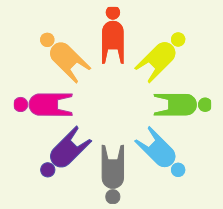
Geography

Year 5

Sow, Grow, Farm



Shakespeare
Primary School
and Nursery



Speak like a Geographer

Arable farming produces crops like wheat, vegetables and oil seeds.



Pastoral farming raises animals and livestock for meat, wool or dairy products.



Mixed farming is when a farm grows crops as well as keeping animals.



Vegetation is the plants, trees and flowers.

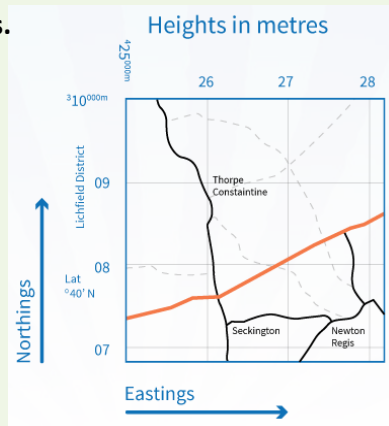
Locational and Place Knowledge

Leeds is in a **temperate** climate zone. Leeds is a **temperate deciduous forest** biome.

Ordnance Survey (OS) maps

Across the top and bottom edges, the numbers increase west to east – these are called **eastings**.

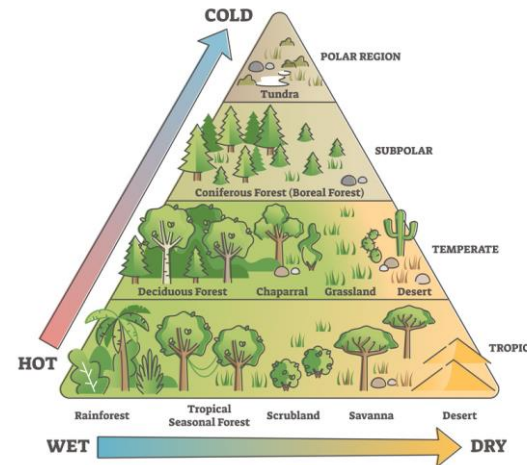
Along the left and right-hand sides of your map the numbers increase from south to north – these lines are known as **northings**.



Human and Physical Geography

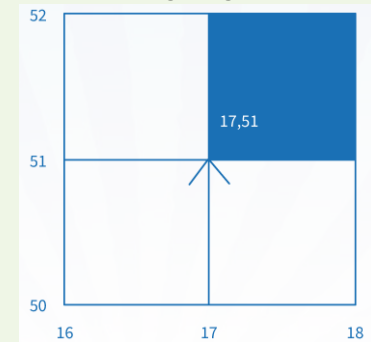
The weather changes in different parts of the world. Where there are similar weather patterns this is known as **climate**.

Within **Climate Zones**, there are biomes. A **Biome** is an area of land that shares the same climate, animals and plants.

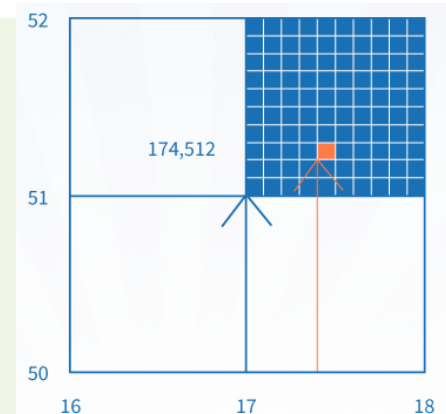


Geographical Skills and Fieldwork

Where an easting and a northing line meet in the left-hand corner of a square, you can put these two numbers together to form a four-figure grid reference.



By adding an extra number (between 1 and 10) to the easting and the northing, you'll come up with a six-figure reference that pinpoints a place to within 100 metres on the map.



Enquiry questions

What is a biome?
How do biomes impact farming?
How can farming be more environmentally friendly?

What is the link between climate zone and biomes?
Why are different farming methods used?

Key concepts

- Sustainable Development
- Human and Physical Processes

Biomes: Rainforest, Savanna, Deserts, Mediterranean, Temperate Forests, Grasslands, Taiga Tundra