



History

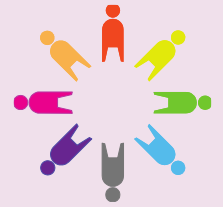
Year 2

Queens of the Past

1837 AD – 2022 AD

How do different kings and queens rule?

Shakespeare
Primary School
and Nursery



Essential knowledge

Britain has had a monarchy (a king or queen) for hundreds of years. But nowadays it is also a democracy. This means we vote for who rules our country. In this topic, we will learn about two monarchs and how they reigned in different times in history.

One of these monarchs is Queen Victoria. She was the second longest reigning British monarch in history. Her reign was a time of great change in how things are made, how we travel and how we learn.

We will also learn about Queen Elizabeth II who was the longest reigning monarch in British history. She also reigned during a time of change and new inventions (like the World Wide Web).

In this topic, we will identify how the role of the monarchy has changed over time.



Speak like a Historian

Monarch – This is a king or queen of a country.

Parliament – This is the group of people who vote for new laws in the UK. The leader of our parliament is the Prime Minister.

Reign – The time when a king or queen rules.

Source – Evidence which helps us to understand parts of history.

Coronation – A ceremony at which a person is made king or queen.

Significant – Important or likely to have influence.

Key questions

What was life like during the reign of Queen Victoria?

What was life like during the reign of Queen Elizabeth II?

Who is the longest reigning monarch?
Who is the second longest reigning monarch?

What happened during the reigns of Queen Victoria and Queen Elizabeth II?

Who is Queen Elizabeths oldest child?

Significant people

Queen Victoria was the queen of the United Kingdom from 1837 to 1901. She was a popular monarch and ruled during a time of great change.

Queen Elizabeth II was the queen of the United Kingdom from 1952 to 2022. She was the longest reigning monarch of the UK and was succeeded by her son King Charles III.



Substantive concepts

- Monarchy
- Peace and Conflict

Timeline



Stone Age to Iron Age
5000BC-500AD



Ancient Egypt
3100-30BC



Ancient Greece
800-323BC



Romans
AD43-410



Benin
900-1897AD



The Great Fire of
London
1666



Victorian period
1837-1901



World War 2
1939-1945



Moon Landing
1969