



History

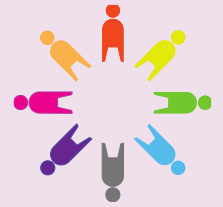
Year 1

The Great Fire of London 1666

Why did the Great Fire of London cause so much damage?

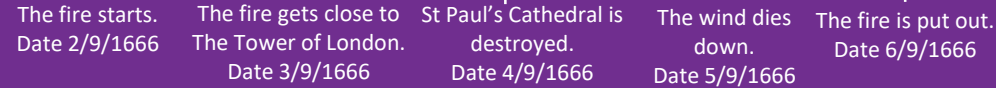


Shakespeare
Primary School
and Nursery



Essential knowledge

The fire started in a bakery in 1666. The fire spread because the buildings were made of wood. There were strong winds that moved the fire and there was a drought so all building materials were dry. Samuel Pepys wrote a diary. Thomas Farriner was the baker at the bakery where the fire is believed to have started. There were no fire brigade so local people had to put the fire out. King Charles ii ordered that houses were pulled down to stop the fire from spreading. Leather buckets and water squirts were used to put out the fire. A large part of the city was destroyed and lots of people were made homeless. As a result of the fire men got jobs to put out fires: the first fire brigades were formed.



Speak like a Historian

Significance

Great importance.

Monarchy

The King, Queen or Royal family of a country.

Cause

The reason something has happened.

Consequence

A result of something that has happened.

Materials

Something things are made from.

Project questions

How did the fire change London?

Who was Samuel Pepys?

How do we know about the fire?

What materials were the buildings made out of?

When was the Great Fire of London?

Where did the fire start?

Significant people

Samuel Pepys was born in 1633. He lived through the Great Fire of London and the Plague. He wrote a diary which described two of the most important events in English history: The Plague in 1665 and the Great Fire of London in 1666 in his diary. He buried cheese and wine in his garden to keep them safe. Samuel Pepys died in 1703.



Substantive concepts

- Monarchy

Timeline



Stone Age to Iron Age
5000BC-500AD



Ancient Egypt
3100-30BC



Ancient Greece
800-323BC



Romans
AD43-410



Benin
900-1897AD



The Great Fire of
London
1666



Victorian period
1837-1901



World War 2
1939-1945



Moon Landing
1969