

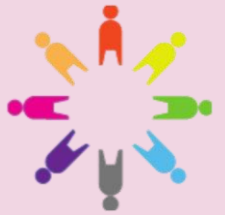


Personal Development Year 6

Elevate and Create

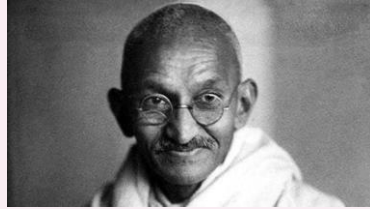
How can our decisions and actions have a positive impact on the world?

Shakespeare Primary School and Nursery



Peace and Conflict

In learning about conflict, it is crucial that we approach the subject with sensitivity and content that fosters understanding, empathy, and conflict-resolution skills. Simply put, the concept of conflict is a disagreement or struggle, and there are a variety of forms and causes such as misunderstandings and competition for resources amongst many others. Exploring the importance of resolving conflicts peacefully is central to our curriculum of excellence from the heart of Leeds, emphasizing the role of empathy, communication, and compromise for lasting peace. Whilst looking at the impact of conflict on individuals, communities, and historically, we must also highlight positive role models and strategies for peaceful resolution. Recent history has seen a rise in non-violent protest and social/political movements to create everlasting change. Historical and contemporary examples like Gandhi, Martin Luther King Jr., and movements such as Fridays for Future help us to grasp the power of peaceful strategies for societal change.



How the Arts can Influence Change

Music and visual art, as potent agents of change, emotionally connect with audiences, fostering empathy and inspiring support for societal transformation. In protest songs and visual commentaries, they raise awareness, spotlighting overlooked issues and prompting re-evaluation. The arts become catalysts for activism, providing anthems and symbols for social movements, fostering solidarity. Moreover, they bridge diverse communities through concerts and exhibitions, fostering dialogue and understanding. Traditional elements in music and art preserve cultural heritage while also serving as tools for cultural evolution. By challenging norms and pushing boundaries, the arts encourage fresh perspectives, contributing to personal and societal change.

Key Vocabulary: trust, communication, mutual respect, understanding, catalyst, societal influence, perspectives

Relationships with Others

Communication	Respect	Trust	Shared Values
Effective communication is a cornerstone of relationships, enabling partners to express their thoughts, feelings, and needs openly while actively listening to one another.	Respect forms the basis of appreciating each other's individuality, opinions, and boundaries.	Trust is developed through consistent honesty, reliability, and transparency, creating a sense of security and emotional safety.	Shared values, interests, and goals contribute to a sense of connection and shared purpose. Healthy relationships also acknowledge and navigate conflicts constructively, with a focus on compromise and finding solutions rather than blame.

A positive, healthy relationship is a partnership where individuals grow and thrive together. Attributes include fostering emotional well-being, happiness, and a sense of fulfilment.

Significant People

One of the artists exhibited at Leeds Art Gallery is **Alan Davie**, who is recognised internationally as a radical force in modern painting, and is regarded as one of the most influential artists of his time. As an artist, he created his own unique style, was thoroughly spontaneous, and used his personal interests (including primitive art, Abstract Expressionism, Surrealism and Zen Buddhism) to create his style.



Pablo Picasso stands as one of the most influential artists of the 20th century. Over his long and prolific career, the Spanish artist pioneered new styles, techniques, and forms of artistic expression that fundamentally shaped modern art. His constant experimentation and innovation across a range of media transformed both the creation and meaning of art in profound ways.



Project Questions

- Why are resolutions to conflict so important?
- Can I stand up for something without creating conflict?
- How does creativity have the potential to create positive change?
- How can I maintain positive relationships and why is this important?