



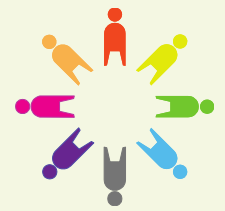
Geography

Year 2

Caring for the Coast

How can we look after our planet?

Shakespeare
Primary School
and Nursery



Speak like a Geographer

Coastline- the land along the coast, where the land meets the sea. There are different types of coasts. There are many different coastal towns in the UK. The wind and waves can cause changes to the coast.



Wind energy- When it is windy, wind turbines spin and this produces electricity. You can often find wind turbines in the sea, beside coastal areas. This is because there are no tall buildings in the sea to block the wind.

Pollution- is harmful materials which damage the environment.

North, East, South and West- these are directions

Hemisphere- one half of the earth. The top half of the Earth is called the Northern Hemisphere, the bottom half is called the Southern Hemisphere.

Ocean- a large area of salty water

Human features- things you can see around you that have been built by people.

Physical features- natural things you can see all around you. They would be here even if there were no people.

Locational and Place Knowledge

There are 5 major oceans: Pacific Ocean, Atlantic Ocean, Indian Ocean, Arctic Ocean and the Southern Ocean.



Compare and Contrast

Bridlington is a **coastal town**. Coastal areas are different to urban and rural areas. They have a beach and often a harbor or port. At the seaside, there may be beach huts or sand dunes, a pier or a lighthouse. There is lots of wildlife on the coast: seagulls, fish, seals and crabs.

Leeds is a **city** in the UK and is located **inland**. Leeds is in the county **West Yorkshire**, in the UK. It is an urban area. It has more buildings, factories and offices. There are a lot of shops and more people live here.

Human and Physical Geography

Human features: port, harbor and beach



Physical features: sea, ocean, beach, vegetation



Geographical Skills and Fieldwork

Northern Hemisphere



Southern Hemisphere

There are coastal towns all over the world, in the northern and southern hemisphere. The Equator is an invisible line that runs around the centre of the Earth.

An **atlas** is a collection of maps. We can find coastal towns by looking at these maps to find the coastline, then read the names of towns nearby.



Project Questions

- Can you use an atlas to locate coastal towns all over the world?
- What are the similarities between Leeds (urban) and Bridlington (coastal)?
- What are the human and physical features of a coastal town?
- What energy can be created in coastal towns?

Key concepts

- Compare and contrast
- Human and physical processes



Fieldwork question for your coastal visit: why do people go to the beach?

Your task is to find out by...gathering information, measuring, sketching information and collecting audio