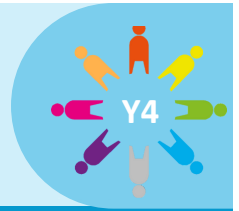


States of Matter



How can we investigate changes of state?



Project Questions

- Give an example of a solid, liquid and a gas. How do you know?
- What happens to water when it is heated or cooled?
- What is the water cycle?
- How does temperature affect how an ice block evaporates?

Visits and Visitors

Touring Theatre Company, Classroom Kitchen, skipping competition

Shakespeare 60

Watch a live show, count to 20 in a foreign language

Golden Themes

Human rights:

- UN Convention on the Rights of the Child
- reasons why some people have their rights denied
- those responsible for rights being met (e.g. teachers, local and national government)

KEY DATES: Thursday 18th April- Skipping competition, Armley Leisure Centre | Friday 19th April- Shine a light on Eid, non-uniform day | Monday 22nd April- Visit from author Maria Farrer | Wednesday 24th April- Timestable meeting in the school hall 9am | Wednesday 1st May- Parent Voice | Thursday 2nd May - Y3/4 Cricket competition | Friday 3rd May - Dance Spectacular at Headingley Stadium | Wednesday 8th May- Classroom kitchen (4L and 4R) | Tuesday 14th May - Y3/4 Netball festival | Wednesday 15th May- Classroom kitchen (4P) | Friday 24th May- School closes at 3pm for 1 week holiday

ATTENDANCE



NEVER ABSENT
NEVER LATE

- ✓ Well done to all the children who had 100% attendance last half term! This is a brilliant achievement.
- ✓ Please continue to support us in helping your child reach their full potential by ensuring they attend school **every** day.
- ✓ Attendance has been impacted by sickness absence this half term.
- ✓ Whole school attendance so far this academic year is **96%**.
- ✓ Attendance in Year 4 last half term was **96.2%**. Well done!

☑ To report an absence please contact us on the number below:

☎ 01135351000

✉ office@shakespeareleeds.org.uk

WE ARE READING:



To read about the Year Four curriculum in more detail please visit our school website

**SHAKESPEARE
PRIMARY SCHOOL**

A curriculum of excellence
from the heart of Leeds

www.shakespeareleeds.org.uk

