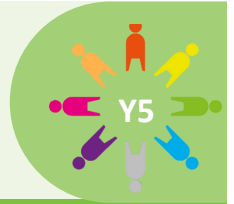
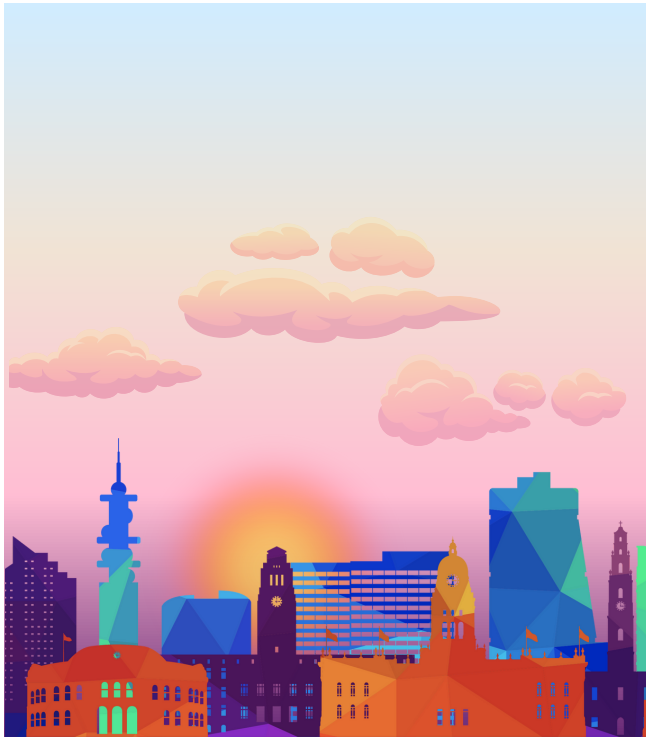


## ID: Leeds



### Who am I and how is Leeds a part of me?



#### Project Questions

- Can you name 3 cities and their counties in the UK?
- Can you name at least 3 different types of land use?
- What is the topography of land in Leeds?
- How is land used in Leeds?
- How has land use in Leeds changed over time?

#### Visits and Visitors

Fieldwork trip around Burmantofts to map land use

#### Shakespeare 60

Learn to play chess, learn the ukulele, visit a museum, learn to swim

#### Golden Themes

##### Human rights:

- Universal Declaration of Human Rights
- Importance of citizens, societies and governments respecting and defending people's human rights
- Current and historical human rights issues and movements in own country and elsewhere

**KEY DATES:** Friday 19th April- Shine a light on Eid, non-uniform day | Tuesday 30th April- Fieldwork trip, walk around Burmantofts (5K) | Wednesday 1st May- Parent Voice | Wednesday 1st May- Fieldwork trip, walk around Burmantofts (5H) | Friday 3rd May - Dance Spectacular at Headingley Stadium | Thursday 2nd May- Fieldwork trip, walk around Burmantofts (5AB) | Friday 24th May- Brownlee Triathlon Event | Friday 24th May- School closes at 3pm for 1 week holiday

### ATTENDANCE



**NEVER ABSENT  
NEVER LATE**

- ✓ Well done to all the children who had 100% attendance last half term! This is a brilliant achievement.
- ✓ Please continue to support us in helping your child reach their full potential by ensuring they attend school **every** day.
- ✓ Attendance has been impacted by sickness absence this half term.
- ✓ Whole school attendance so far this academic year is **96%**.
- ✓ Attendance in Year 5 last half term was **96.8%**. Well done!



To report an absence please contact us on the number below:

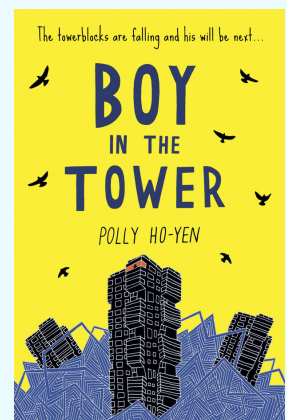


01135351000



office@shakespeareleeds.org.uk

### WE ARE READING:



To read about the Year Five curriculum in more detail please visit our school website

**SHAKESPEARE  
PRIMARY SCHOOL**

A curriculum of excellence  
from the heart of Leeds

[www.shakespeareleeds.org.uk](http://www.shakespeareleeds.org.uk)

