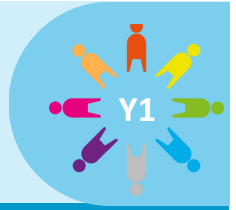


Carnivores, Herbivores and Omnivores



What sort of animal am I?



Project Questions

- Can you name one of each of the vertebrate groups?
- Can you name one carnivore?
- Can you name one omnivore?
- Can you name one herbivore?
- How can we keep animals safe in our local environment?

Visits and Visitors

Trip to Yorkshire Wildlife Park, artist visit, Classroom Kitchen

Shakespeare 60

Visit a zoo

Golden Themes

Human rights:

- rights in class and school
- the need to respect the rights of others
- basic human rights and how some people have these denied

KEY DATES: Friday 19th April- Shine a light on Eid, non-uniform day | Wednesday 24th April- Classroom kitchen (1W) | Monday 29th April- Artist visit | Wednesday 1st May- Classroom kitchen (1MB and 1EB) | Wednesday 1st May- Parent Voice | Friday 3rd May - Dance Spectacular at Headingley Stadium | Wednesday 8th May- Artist visit | Tuesday 14th May- Yorkshire Wildlife Park | Wednesday 22nd May - Year 1 Football festival | Friday 24th May- School closes at 3pm for 1 week holiday

ATTENDANCE



**NEVER ABSENT
NEVER LATE**

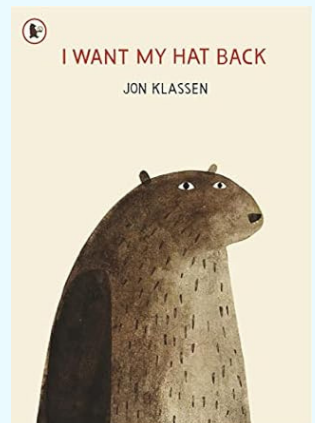
- ✓ Well done to all the children who had 100% attendance last half term! This is a brilliant achievement.
- ✓ Please continue to support us in helping your child reach their full potential by ensuring they attend school **every** day.
- ✓ Attendance has been impacted by sickness absence this half term
- ✓ Whole school attendance so far this academic year is **96%**
- ✓ Attendance in Year 1 last half term was **96.3%**. Please contact us if you need support with your child's attendance.

✓ To report an absence please contact us on the number below:

☎ 01135351000

✉ office@shakespeareleeds.org.uk

WE ARE READING:



To read about the Year One curriculum in more detail please visit our school website

**SHAKESPEARE
PRIMARY SCHOOL**

A curriculum of excellence
from the heart of Leeds

www.shakespeareleeds.org.uk

