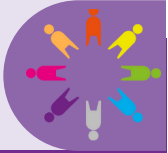


World War II: A Child's View



What effect did WW2 have on children around the UK, and especially in Leeds?



Project Questions

What happened to children during the war and what impact do you think this would have had on them? **Why** do you think the families were evacuated from the big cities? **Who** were the allies and the axis? **What** happened during the Blitz? **Why** was D-Day so significant? **What** effect did the war have on the people and city of Leeds?

Visits and Visitors

Tom Palmer – Author visit in school, Whitby residential
Eden Camp – WW2 experience trip

Shakespeare 60

Go on a boat, fossil hunting, rock pooling and visit ruins

Golden Themes

Voice and influence: basic national, regional (e.g. EU) and global governance structures and systems, and differences between countries • how a lack of power and representation can result in discrimination and exclusion • the power of collective action and role of social movements and governments in tackling injustice
Peace and Conflict: Wider causes and effects of conflict at all levels

KEY DATES:

- Friday 6th September- Author Tom Palmer visit
• Wednesday 18th September- Parent Voice • 19th/20th September- Eden Camp visit
• Friday 11th October- D:Side Internet Safety • W/C 21st October- Whitby • VE Day Party – Dates TBC

ATTENDANCE

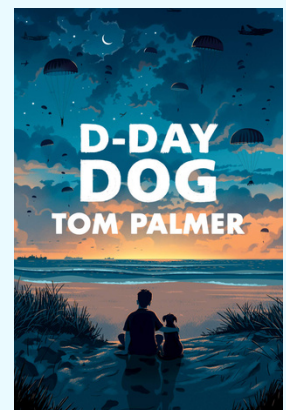


NEVER ABSENT

NEVER LATE

- 🕒 School starts at **8:45**
- ✅ It is illegal for your child to be absent from school without authorisation
- ✅ High attendance in school gets your child's life off to a flying start!
- ✅ To report an absence please contact us on the number below:
- ☎ 01135351000
- ✉ office@shakespeareleeds.org.uk

WE ARE READING:



To read about the Year Six curriculum in more detail please visit our school website

**SHAKESPEARE
PRIMARY SCHOOL**

A curriculum of excellence
from the heart of Leeds

www.shakespeareleeds.org.uk

