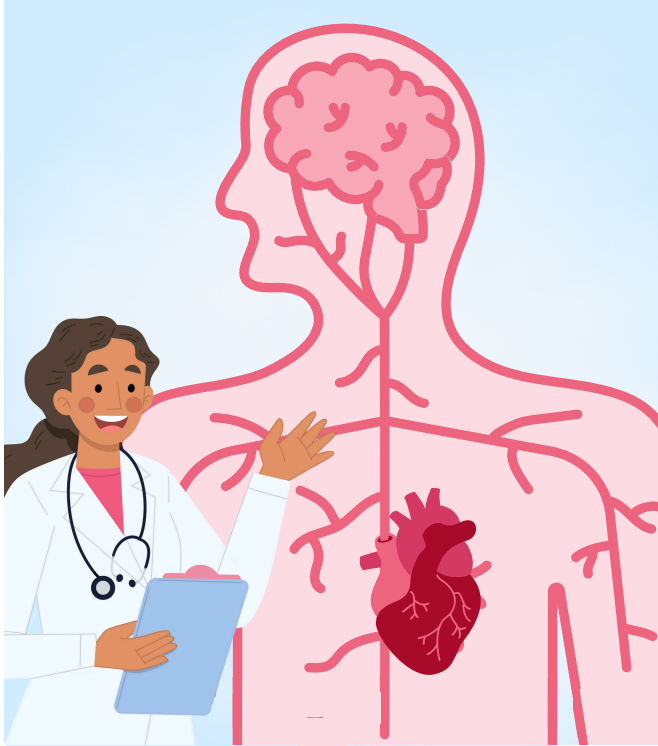


The Human Heart



How do I maintain a healthy heart and what's the point?



Project Questions

Can you explain the main parts of the human circulatory system and their functions? **How** does the heart work to pump blood throughout the body, and why is this function important? **What** are the different types of blood vessels, and how do they each play a role in the circulatory system? **How** does a healthy diet and regular exercise impact the way our bodies function, especially in terms of the circulatory system? **Can** you explain the importance of water and nutrient transport in our bodies? **How** does this process work?

Visits and Visitors

Local surgeon visitor, local businesses support during British Heart Foundation fundraiser

Shakespeare 60

Ride a bike on the road, take part in a debate, raise money for a charity

Golden Themes

Social Justice and Equity- ways of defining and measuring poverty (relative and absolute) and inequality • inequalities within and between societies and how these change • wider causes and effects of poverty, inequality and exclusion

KEY DATES:

- Tuesday 5th November- Individual and sibling photos
- Wednesday 13th November- Flu immunisations
- Thursday 14th November- Tutti Frutti Theatre Performance Y2 and Y3
- Wednesday 20th November- Parent Voice
- Friday 6th December- D:Side Y6
- Tuesday 10th December- Y5/6 nativity rehearsal at BCC
- Wednesday 11th December- Y5/6 nativity rehearsal at BCC

ATTENDANCE

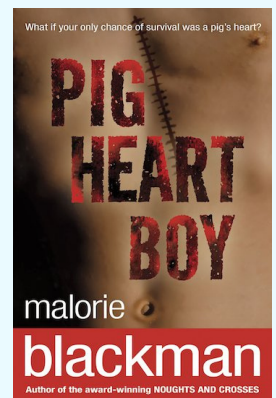


NEVER ABSENT

NEVER LATE

- 🕒 School starts at **8:45**
- ✅ It is illegal for your child to be absent from school without authorisation
- ✅ High attendance in school gets your child's life off to a flying start!
- ✅ To report an absence please contact us on the number below:
☎ 01135351000
✉ office@shakespeareleeds.org.uk

WE ARE READING:



To read about the Year Six curriculum in more detail please visit our school website

**SHAKESPEARE
PRIMARY SCHOOL**

A curriculum of excellence
from the heart of Leeds

www.shakespeareleeds.org.uk

