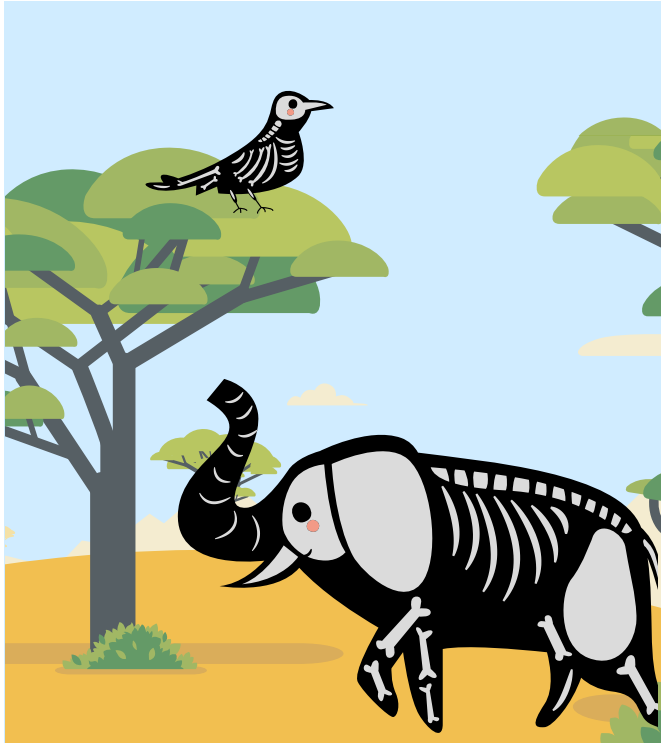


Animal Bones and Animal Homes



How do geographers describe the world?



Project Questions

- What** are the names of some countries in Europe?
- What** are the names of some countries in North and South America?
- Why** do different animals live in different parts of the world?
- Can** you name and describe the features of at least two different vegetation belts?

Visits and Visitors

Dogs Trust Leeds, birds of prey workshop

Shakespeare 60

Look after a pet, go carol singing

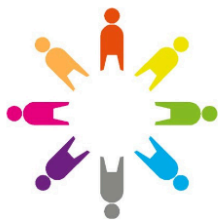
Golden Themes

Social Justice and Equity- how fairness may not always mean equal treatment • some causes and effects of poverty and inequality (including gender inequalities) at local, national and global levels

KEY DATES:

- Tuesday 5th November- Individual and sibling photos
- Wednesday 6th November – Y3 Zoom with Christina Balit
- Thursday 7th November – Y3 Birds of Prey Workshop
- Wednesday 13th November- Flu immunisations
- Thursday 14th November- Tutti Frutti Theatre Performance Y2 and Y3
- Wednesday 20th November- Parent Voice
- Tuesday 10th December- watch Y5/6 nativity rehearsal at BCC

ATTENDANCE

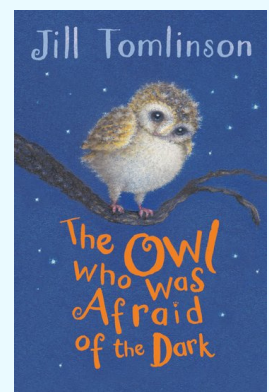


NEVER ABSENT

NEVER LATE

- 🕒 School starts at **8:45**
- ✅ It is illegal for your child to be absent from school without authorisation
- ✅ High attendance in school gets your child's life off to a flying start!
- ✅ To report an absence please contact us on the number below:
☎ 01135351000
✉ office@shakespeareleeds.org.uk

WE ARE READING:



To read about the Year Three curriculum in more detail please visit our school website

**SHAKESPEARE
PRIMARY SCHOOL**

A curriculum of excellence
from the heart of Leeds

www.shakespeareleeds.org.uk

